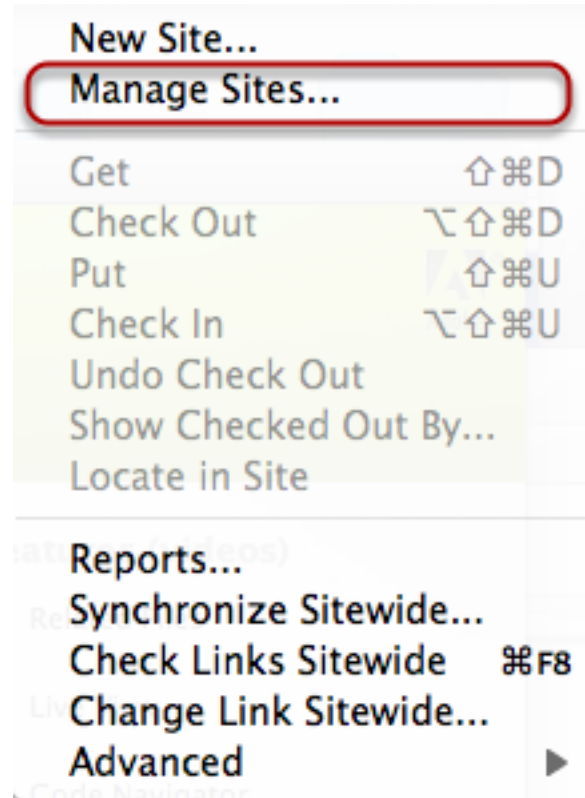


Introduction to Dreamweaver: FTP and How to Define Your Website

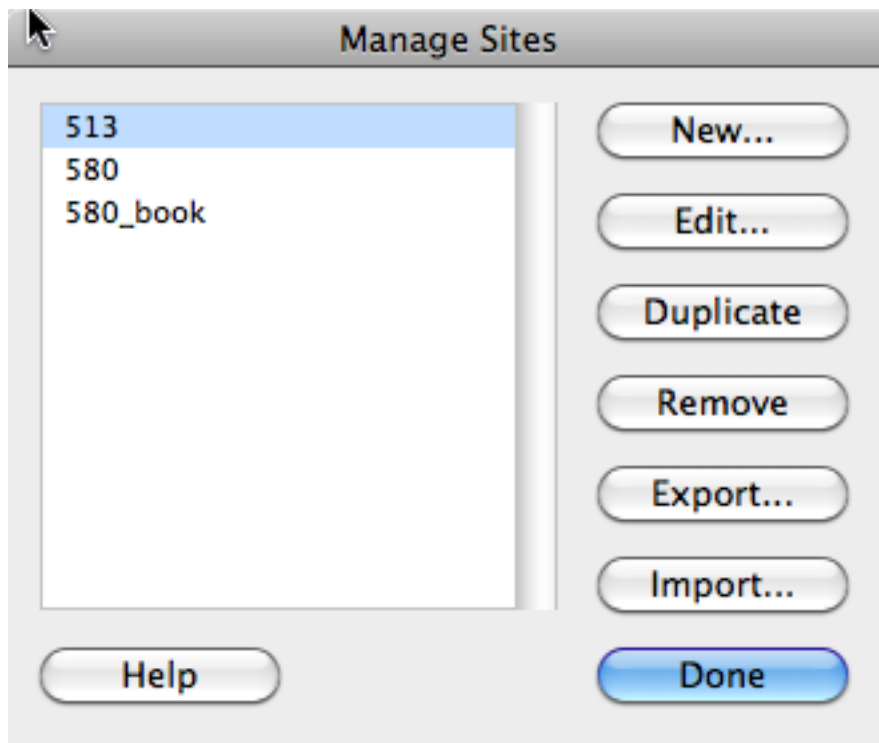
In this lesson you will learn how to define your local website in Adobe Dreamweaver and how to use Dreamweaver to FTP or transfer your files to your server.

Launch Adobe Dreamweaver and Manage Your Website



Launch Adobe Dreamweaver. Before you start using Dreamweaver, you need to tell the program where you will be saving all your files by defining your website. Under the site menu, select Manage Sites . . .

Manage Your Website



In the Manage Sites, dialog box, click on New . . . button to define a new site or select a site you have already completed.

Define Your Website

Site Definition for 513_Spring_2011


Basic **Advanced** 1


Category

- Local Info
- Remote Info
- Testing Server
- Version Control
- Cloaking
- Design Notes
- File View Columns
- Contribute
- Templates
- Spry

Local Info

2 Site name: 513_Spring_2011

3 Local root folder: /Users/jmcgarvey/Documents/Cal Poly Classe 

4 Default images folder: /Users/jmcgarvey/Documents/Cal Poly Classe 

5 Links relative to: Document Site root

6 HTTP address: http://

This address is used for site relative links, and for the Link Checker to detect HTTP links that refer to your own site.

Case-sensitive links: Use case-sensitive link checking

Cache: Enable cache

The cache maintains file and asset information in the site. This speeds up the Asset panel and link management features.

Help Cancel OK

1. Make sure you are in Advanced mode, by clicking on the Advanced button at the top of the dialogue box.
2. Give Your Web Site a name. This is just to identity your website in Dreamweaver.
3. Click on the little folder and navigate to the folder where you will be saving your website on your computer.
4. Click on the little folder and navigate to your default images folder, where you will be saving all your image files.
5. You have two options here to define your relative links: Document or Site Root. If you are creating

static html pages with Javascript, and CSS, I would strongly suggest you use the default document related links. Site Root can be useful if you are creating server side websites.

6. Optional: If you know where you will be uploading your files, you can type in the full url for your website. This is required for PHP and server side scripting. For Calpoly, your url would be: <http://www.csupomona.edu/~bronconame>.

Remote Info

Site Definition for 513_Spring_2011

Basic Advanced

Category

- Local Info
- Remote Info
- Testing Server
- Version Control
- Cloaking
- Design Notes
- File View Columns
- Contribute
- Templates
- Spry

Remote Info

1 Access: FTP

2 FTP host: login.unx.csupomona.edu

3 Host directory: /user/ /www/

4 Login: Test

Password: Save

Use passive FTP

Use IPv6 transfer mode

Use firewall Firewall Settings...

5 Use Secure FTP (SFTP) Server Compatibility...

Maintain synchronization information

Automatically upload files to server on save

Check in/out: Enable file check in and check out

Help Cancel OK

Click on the Remote Info Category on the Left Side of the Site Definition Dialogue box.

1. From the Access: drop down menu select FTP.

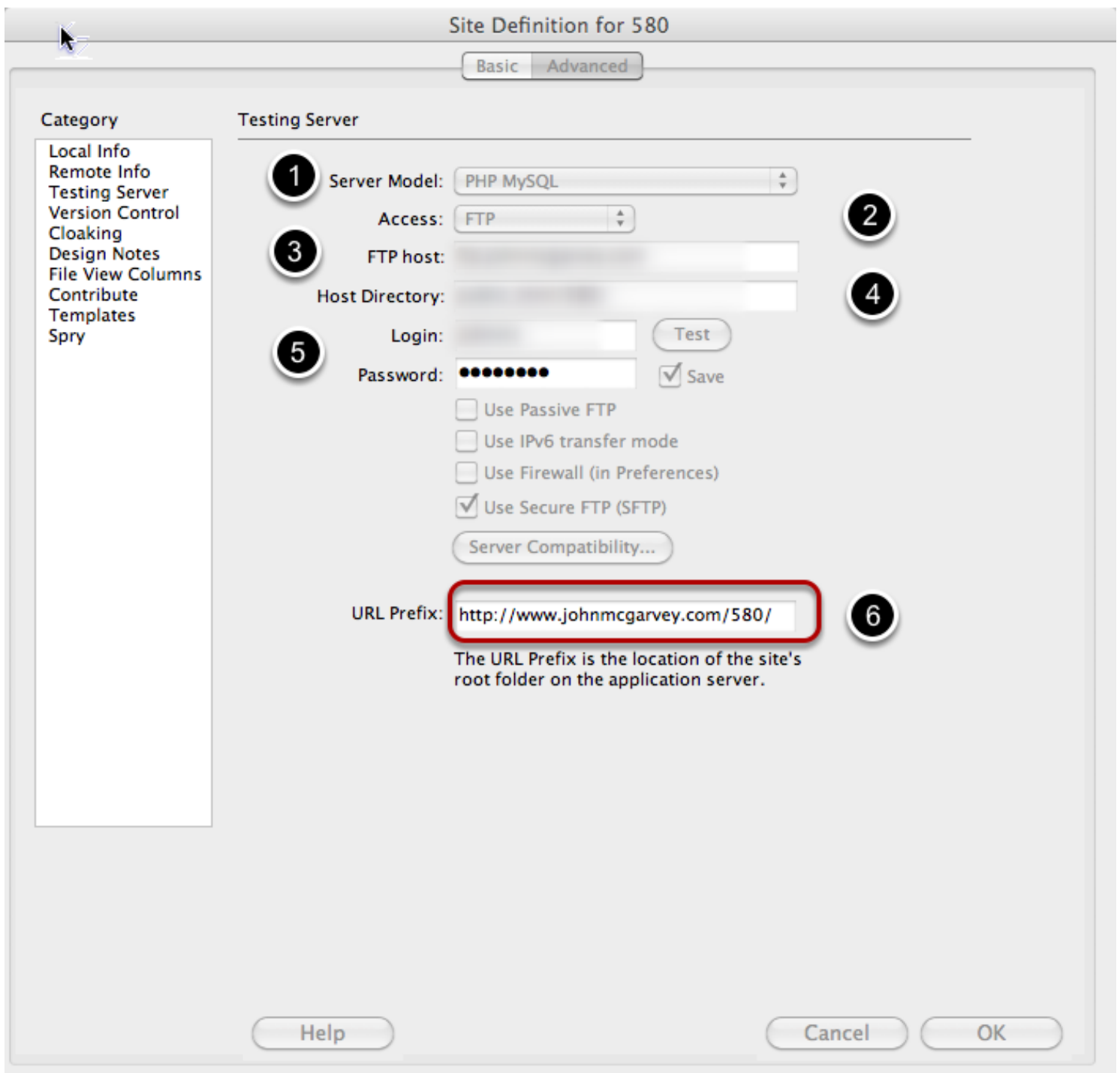
2. Type in the FTP address for the server where you will be hosting your files.

3. Type in the directory path where your hosted files will be located on your webserver. This is usually:
 - a. /public_html/ (most Unix servers use public_html as the default public web directory)
 - b. /user/username/www/ (replace username with your bronco username)
4. Enter your username and password. (This should have been emailed to you when you created your account with your web hosting company.)
5. Some servers (including Cal Polys) require that you use Secure (SFTP) to connect to their servers.

Click on the Test button to make sure you can connect to your server.

Click on the OK button and then the Done button (if you do not have to setup a testing server for php / MySQL websites).

Optional Step (Setting Up a Testing Server for PHP MYSQL)

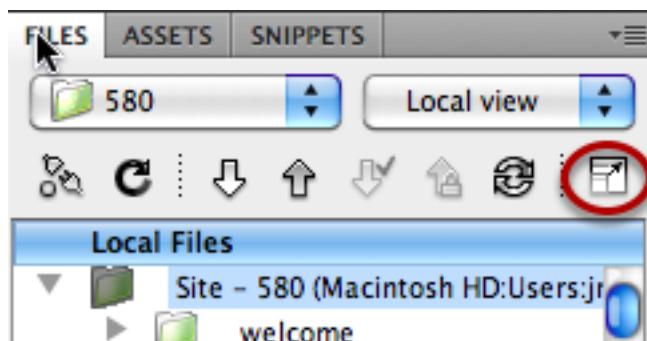


Click on Testing Server from the Category Menu

1. Under the Server Model drop down menu select PHP MYSQL.
2. Access: Select FTP.
3. Type in the FTP host address (same as remote info).
4. Type in Host directory (same as remote info).
5. Type in your login and password.
6. Dreamweaver always gets the URL Prefix wrong. You will have to delete the Host Directory Path and just include the URL and directory structure to your site (as if you were typing it in your web browser to

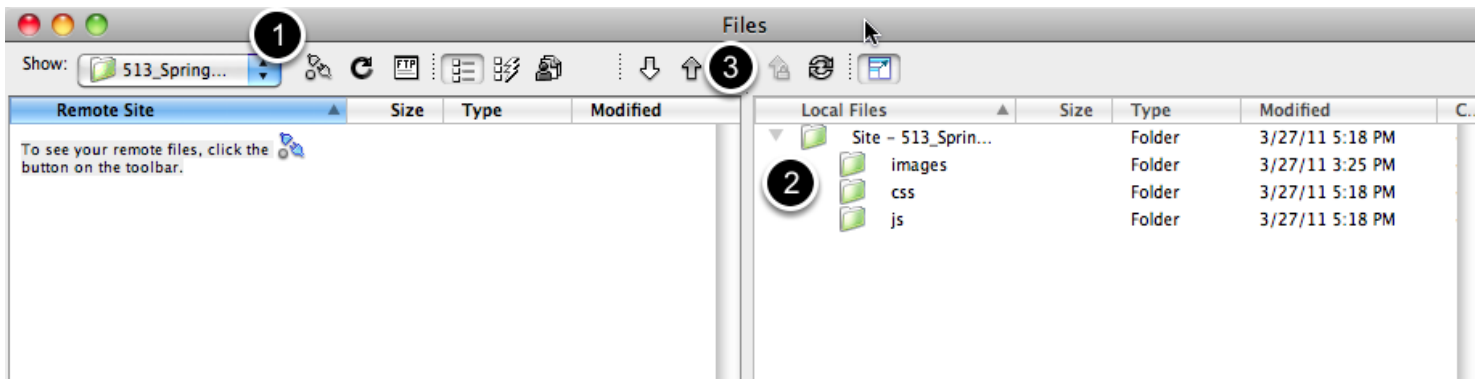
access your page). You will also need to fix the HTTP address under the Local Info category (Part 6 of the Define Your Website Step above).

FTP: How to Transfer Your Files to Your Server



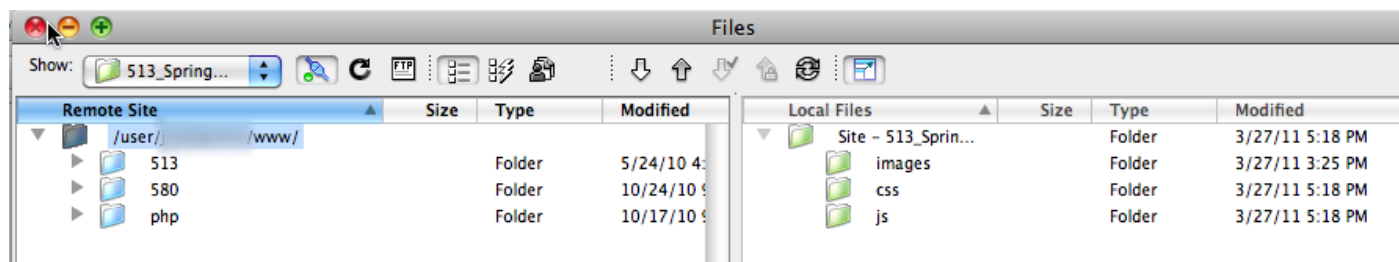
Under the files panel, click on the expand button to show the local and remote sites. (You can turn on and off the files panel, by selecting Files under the Window Menu).

Upload Your Files



1. To connect to your remote host, click on the plug icon.
2. Highlight the local files that you want to upload.
3. Click on the up arrow button to upload the files to your remote server.

Review Your Remote Files



Make sure the files you uploaded are located in the correct public directory on your remote server. For example, on Cal Poly's server all public web pages would be in the www directory which is located in your user directory.